



supplying quality products to Original Equipment Manufacturers
distributors, ground support service companies, and the airlines of the world



We distinguish from others by quality



ABOUT US

- Aerocouplings, develops, tests and manufactures Pre-Conditioned Air (PCA) Inlet Coupler/Adapter/Connector and PCA Hose and Jet Airstart Hoses, GPU, installations for the aeronautical industries. (Airports, Handling companies, Airlines and private users.)
- Deliveries throughout Europe and the rest of the world are prompt and right on time.
- Aerocouplings is a Belgium based company established in 1997 and started with the mass production in 2007. We managed to increase business together with the expansion of the production facilities, warehouses and up-to-date testing facilities in a short period of time.
- We stand for top quality products, client first service and worldwide on-time deliveries.
- With over 25 years of experience in the airline industry.
- We do have a 6000 m² productions site, with state of the art CNC machinery and own testing facilities. Own molding and injection machines.
- Own radio welding and many industrial sewing machines.



• Pre-Conditioned Air (PCA) Inlet Coupler/Adapter/Connector and PCA Hose



Potable Water, Lavatory Service, Pneumatic Air Start and PCA adapters.

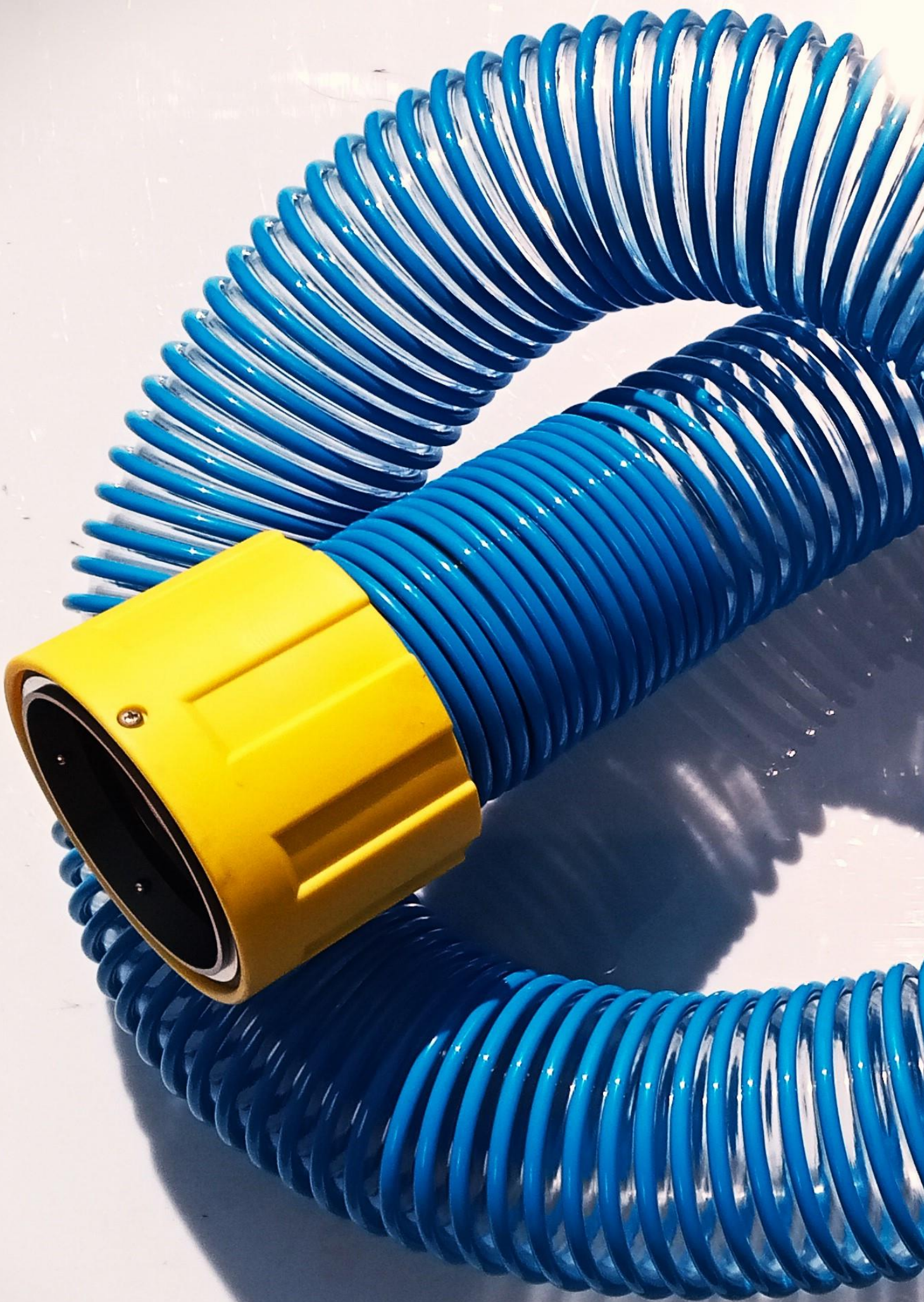
Aerocouplings manufactures aircraft ground support components. Our product offering includes both airborne and ground support equipment components that are emphasized within four product groups: Potable Water, Lavatory Service, Pneumatic Air Start and PCA adapters and oil couplings.

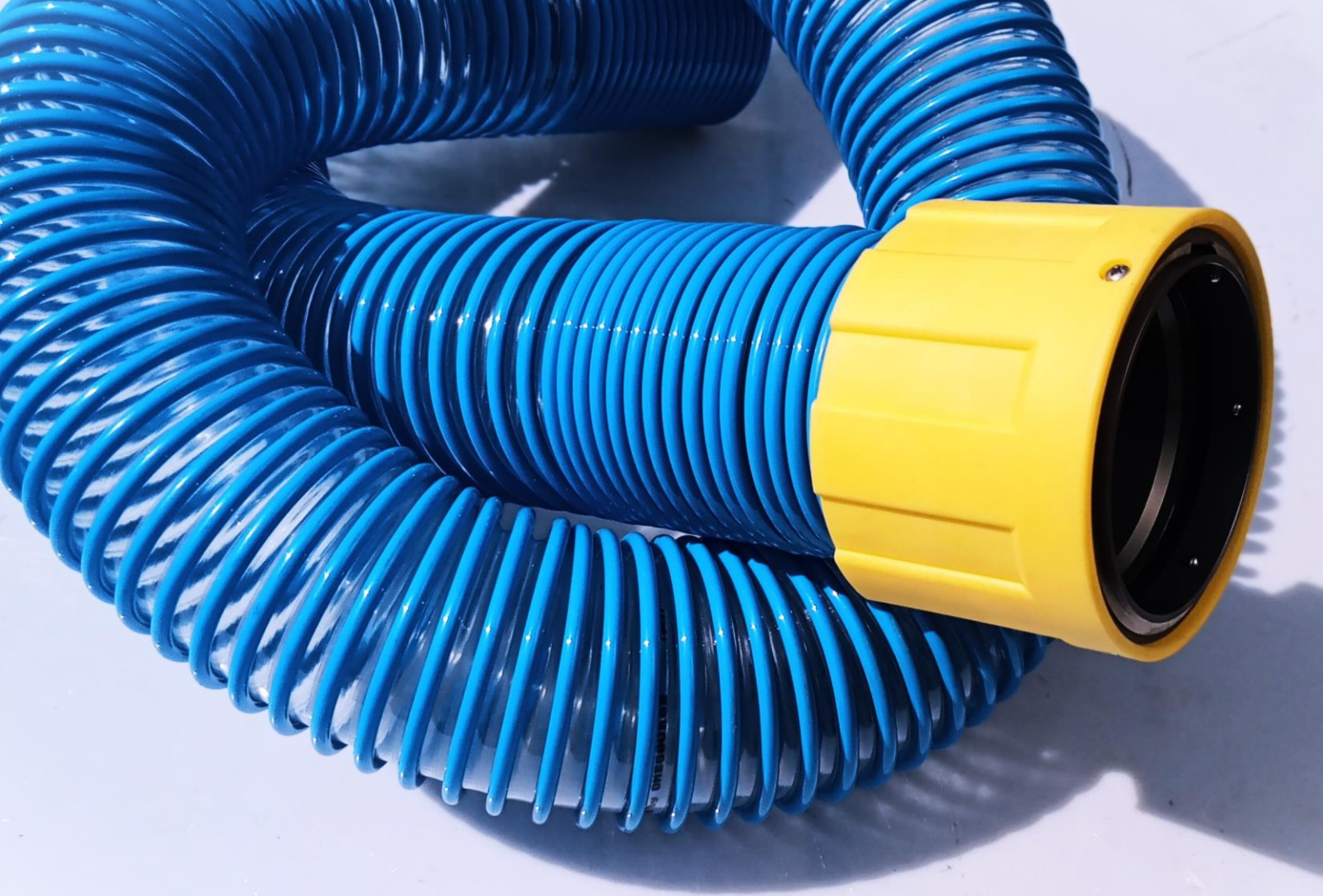
Aerocouplings is a diversified manufacturer of commercial and military aircraft components and ground support equipment products. Our customers include aircraft and ground support Original Equipment Manufacturers, airlines, distributors, and end-users worldwide



**BUILT TO EXCEED THE DEMANDING NEEDS OF THE
GLOBAL AVIATION INDUSTRY**







CERTIFICATION : Meets UL94VTM-O standards

We offer the finest LAVATORY HOSE to meet our customers' needs.

Hoses come standard in 4" diameter and in lengths of 8', 10' and 15' and 20 feet and is made of durable, premium lavatory hose with outstanding features : - Temperature – 40°C to +90°C (-40°F to 194°F) - 30% more abrasion resistant than most of the hoses.

A unique spiral construction that welds a protective polyurethane-coated wire to the hose wall - Lasting 4 times longer than any other hoses used in the same application.

The ultimate hose provides a long and un-interrupted service.

Molecularly bonded and heat-sealed, Nylon rod reinforced

Used in both positive and negative pressure applications.

The original Crush-Proof Lavatory Hose.

Excellent UV stabilization for outdoor use

Mold and mildew inhibitors

(Pictures and data are non binding and can be changed by the manufacturer without notice)

AVAILABLE LENGHTS : 8, 10, 12, 15 or 20 FEET or on request.

P/N ACP-LAV-8 Feet

P/N ACP-LAV-10 Feet

P/N ACP-LAV-12 Feet

P/N ACP-LAV-15 Feet

P/N ACP-LAV-20 Feet



1" Lavatory Service Fill & Flush Cap Standard Collar



PART NUMBER	
AC19018	1" Lavatory Service Fill & Flush Cap Standard Collar
AC19018A	1" Lavatory Service Fill & Flush Cap Standard Collar – with lanyard MS20668

3/4 inch Pure Water Coupling Standard Collar

PART NUMBER	
AC19018	AEROCOUPPLINGS® 3/4 inch Pure Water Coupling Standard Collar
AC19018A	AEROCOUPPLINGS® 1" Lavatory Fill & Flush Coupling Standard Collar



1 inch Coupling extended Collar 5,35 inches - Aluminium

PART NUMBER	
AC19018	AEROCOUPINGS® ¾ inch Pure Water Coupling Standard Collar
AC19018C	AEROCOUPINGS® 1" Lavatory Fill extra long



1 inch Coupling extended Collar 5,35 inches - Aluminium

PART NUMBER	
AC19018	AEROCOUPPLINGS [®] ¼ inch Pure Water Coupling Standard Collar
AC19018C	AEROCOUPPLINGS [®] 1" Lavatory Fill extra long



1 inch Coupling extended Collar 5,35 inches - Aluminium

PART NUMBER	
AC19018	AEROCOUPINGS® ¼ inch Pure Water Coupling Standard Collar
AC19018C	AEROCOUPINGS® 1" Lavatory Fill extra long



3/4 inch Coupling extended Collar 5,35 inches

PART NUMBER	
AC19018E	AEROCOUPINGS® 3/4" Lavatory Fill extra long (+ 5 inch)





1" Lavatory Service Fill & Flush Nipple Internal NPT Termination.



PART NUMBER

ACC1001NPT

1" Lavatory Service Fill & Flush Nipple Internal NPT Termination



1" Lavatory Service Fill & Flush Nipple External NPT Termination, 1



PART NUMBER	
ACC1001NPT	1" Lavatory Service Fill & Flush Nipple External NPT Termination, 1 Piece



3/4" Potable Water Fill Coupling /Plug Assembly, Long Barrel Collar, Size -12, 3/4" External N.P.T. Termination

PART NUMBER

ACC1001PWT

3/4" Potable Water Fill Coupling /Plug Assembly, Long Barrel Collar, Size -12, 3/4" External N.P.T. Termination



GENERAL - ADVANTAGES

- AEROCOUPPLINGS® 3/4" Lavatory Service Breakaway Coupling Reconnectable , 100 lb. Break Rated
- Used to prevent damage to the aircraft pure water service panel and other equipment.
- Re-usable with new "snap ring" and "o" ring.
- Constructed of lightweight anodized quality aluminum.
- Tab of the internal shear ring will break and allow the nipple and housing of the coupling to separate.

PROPERTIES

3/4" Pure water Service
 Maintenance-free
 Withstands hot and cold temperature extremes
 Resistant to ramp chemicals and UV rays
 Constructed of lightweight anodized quality aluminum.

PART NUMBER	
AC19044	1" Lavatory Service Breakaway Coupling Reconnectable , 100 lb. Break Rated
ACP1904-B	3/4" AEROCOUPPLINGS® water Breakaway Coupling Reconnectable



PART NUMBER	
AC19044	1" Lavatory Service Breakaway Coupling Reconnectable , 100 lb. Break Rated
ACP1904-B	3/4" AEROCOUPINGS® water Breakaway Coupling Reconnectable
ACP1904-C	Set of CAM ring + seals



GENERAL - ADVANTAGES

- AEROCOUPINGS® 1" Lavatory Service Breakaway Coupling Reconnectable , 100 lb. Break Rated
- Used to prevent damage to the aircraft lavatory service panel and other equipment.
- Re-usable with new "snap ring" and "o" ring.
- Constructed of lightweight anodized quality aluminum.
- Tab of the internal shear ring will break and allow the nipple and housing of the coupling to separate.

PROPERTIES

1" Lavatory Service
 Maintenance-free
 Withstands hot and cold temperature extremes
 Resistant to ramp chemicals and UV rays
 Constructed of lightweight anodized quality aluminum.

PART NUMBER	
AC19044	1" Lavatory Service Breakaway Coupling Reconnectable , 100 lb. Break Rated
ACP1904-B	3/4" AEROCOUPINGS® Pure water Breakaway Coupling Reconnectable



GENERAL - ADVANTAGES

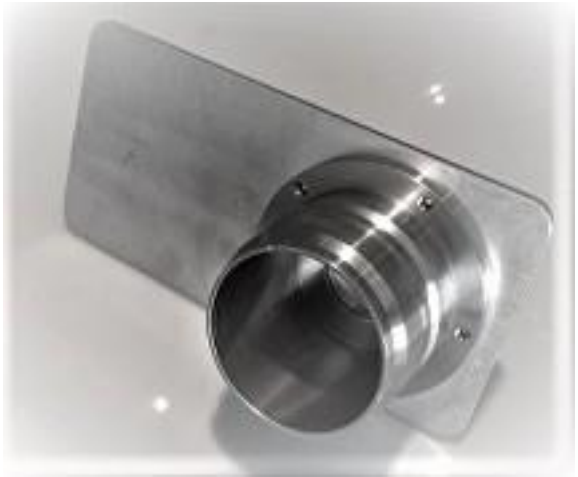
- AEROCOUPINGS® PNEUMATIC AIR START HOSE . AIR START STRAIGHT AIRCRAFT COUPLER WITH A ROUND HANDLE QUICKLY
- CONNECTS TO AND DISCONNECTS FROM AN AIRCRAFT. THE SELF LOCKING DESIGN PROVIDES FOR VISUAL POSITIVE ENGAGEMENT
- WITH THE AIRCRAFT NIPPLE
- Air Start Coupling assemblies are precision engineered for uncompromised performance.
- CHROOM handgrips, anodized
- Mainbody in lightweight anodized quality aluminium

PROPERTIES

Maintenance-free
 Withstands hot and cold temperature extremes
 Resistant to ramp chemicals and UV rays
 Constructed of lightweight anodized quality aluminum.
 Self locking

PARTNUMBERS

PART NUMBER	
ACC1001	Complete ASU couplings including all clamps
ACC1001-A	Clamps only
ACC1001-B	Main body anodized aluminium
ACC1001-C	Pair of handgrips chromom
ACC1001-D	Wire Mesh Screen Only
ACC1001-E	Screen locking clamp
ACC1001-F	Hose Barb Connection Inlets, 3 1/2" Hose Barb Connection Outlet
ACC1001-G	Nipple Connection Inlets, V Band Flange Connection Outlet
ACC1001-H	Splice Tube Only
ACC1001-I	Rubber seal (gasket)



GENERAL - ADVANTAGES

- AEROCOUPINGS® Constructed of stainless steel, this test fitting assembly allows users to securely attach the assembly to a hitch while testing their air start units. The design imitates the restricted air flow caused by air start unit couplers, allowing for an accurate representation of performance while testing..

PROPERTIES

AEROCOUPINGS® PNEUMATIC AIR START test coupling.
Stainless steel.



PART NUMBER	
ASHTC1001	AEROCOUPINGS® PNEUMATIC AIR START test coupling
ASHST1001-A	AEROCOUPINGS® PNEUMATIC AIR START test coupling with mounting assembly



GENERAL - ADVANTAGES

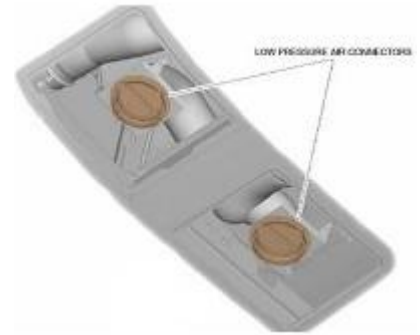
- AEROCOUPINGS® Constructed of stainless steel, this test fitting assembly allows users to securely attach the assembly to a hitch while testing their air start units. The design imitates the restricted air flow caused by air start unit couplers, allowing for an accurate representation of performance while testing..

PROPERTIES

AEROCOUPINGS® PNEUMATIC AIR START test coupling.
Stainless steel.

TABLE

PART NUMBER	
ASHTC1001	AEROCOUPINGS® PNEUMATIC AIR START test coupling
ASHST1001-A	AEROCOUPINGS® PNEUMATIC AIR START test coupling with mounting assembly



COMPLIES WITH ISO 2026

Diameter: 3 inch couplings , according to ISO 2026.

ISO/TC 20/SC 9 Air cargo and ground equipment.

All products are made in Belgium and we do tailor made products.

PART NUMBER	
AC1001	Aerocouplings straight self locking coupler. (Blue)
AC1001/BL	Aerocouplings straight self locking coupler. (Black)
AC1001/GR	Aerocouplings straight self locking coupler. (Green)
AC1001/RE	Aerocouplings straight self locking coupler. (Red)
AC1001/GO	Aerocouplings straight self locking coupler. (Gold)
ACC1001-A	Clamps only
ACC1001-B	Main body anodized aluminium
ACC1001-C	Pair of handgrips chromom
ACC1001-D	Grid Sceen stainless steel
ACC1001-E	Screen locking clamp
ACC1001-F	Hose Barb Connection Inlets, 3-1/2" Hose Barb Connection Outlet
ACC1001-G	Nipple Connection Inlets, V-Band Flange Connection Outlet
ACC1001-H	Splice Tube Only
ACC1001-I	Rubber seal
ACC1001-J	Air start stainless steel stow adapter
ACC1001-K	Airstart stainless steel coupler start test assembly
ACC1001-L	Airstart coupling with T-bolt adapter clamp



GENERAL - ADVANTAGES

- Inlet Coupler/Adapter/Connector is designed for air starting.
- This connector quickly installs and attaches to the aircraft in seconds without the need for connection tools.

PROPERTIES

Diameter: 3"
Maintenance-free
Fits ATA standard flange grip
Will not dent
Withstands hot and cold temperature extremes
Resistant to ramp chemicals and UV rays
Anodized aluminium hardware will not corrode
Ergonomic handles for convenient carrying





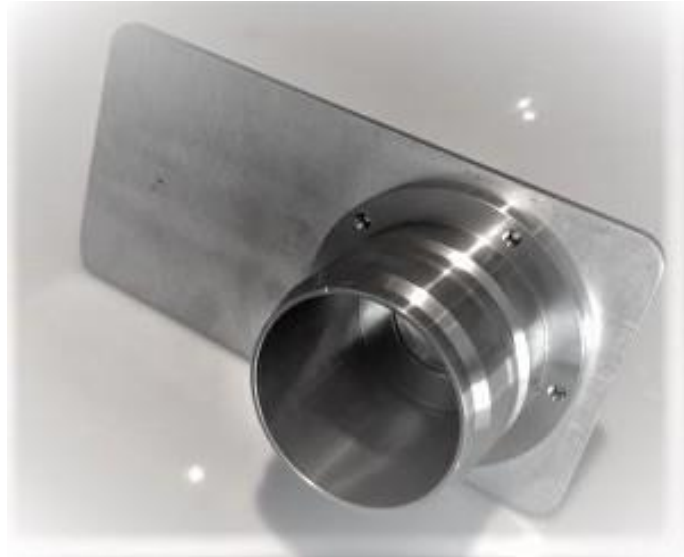
GENERAL - ADVANTAGES

- Inlet Coupler/Adapter/Connector is designed for air starting.
- This connector quickly installs and attaches to the aircraft in seconds without the need for connection tools.

PART NUMBER	
AC1001	Aerocouplings straight self locking coupler. (Blue)
AC1001/BL	Aerocouplings straight self locking coupler. (Black)
AC1001/GR	Aerocouplings straight self locking coupler. (Green)
AC1001/RE	Aerocouplings straight self locking coupler. (Red)
AC1001/GO	Aerocouplings straight self locking coupler. (Gold)
ACC1001-A	Clamps only
ACC1001-B	Main body anodized aluminium
ACC1001-C	Pair of handgrips chromom
ACC1001-D	Grid Sceen stainless steel
ACC1001-E	Screen locking clamp
ACC1001-F	Hose Barb Connection Inlets, 3-1/2" Hose Barb Connection Outlet
ACC1001-G	Nipple Connection Inlets, V-Band Flange Connection Outlet
ACC1001-H	Splice Tube Only
ACC1001-I	Rubber seal
ACC1001-J	Air start stainless steel stow adapter
ACC1001-K	Airstart stainless steel coupler start test assembly
ACC1001-L	Airstart coupling with T-bolt adapter clamp









GENERAL - ADVANTAGES

- AIRSTARHOSES® with are without scuff cover jacket.
- Made from quality silicone compound.
- Durable hoses.

PROPERTIES

Inside diameter: 3.5 in. (8.0 cm)
Wall thickness: 0.1875 in. ± 0.03125 in.
Burst strength: 450 psig
High temperature: +500°F (+260 graden celcius)
Low temperature: 80°F (-62 graden celcius)
80 degrees F to +500 degrees F operating
Operating Pressure: 50psi
Proof Pressure: 250psi (short time)
Lengths 30 , 40,50, 60 feet
Silicone / Dacron(inforced) Hose

PART NUMBER	
ACC1003HS-30	AIRSTARHOSES® PNEUMATIC AIR START hose 30 feet 10 meter
ACC1003HS-40	AIRSTARHOSES® PNEUMATIC AIR START hose 40 feet 13 meter
ACC1003HS-50	AIRSTARHOSES® PNEUMATIC AIR START hose 50 feet 15 meter



GENERAL - ADVANTAGES

- AEROCOUPPLINGS® Bolt Clamp, 4 inches. Stainless steel band clamp used for Air Start Unit hoses.
- Used to secure the Air Start Hose Only (30/40/50/60-foot lengths)

PROPERTIES

4 Inch | Stainless steal.

PART NUMBER	
ACCTBOLT4	Bolt Clamp, 4 inches. Stainless steel band clamp used for Air Start Unit hoses. Used to secure the Air Start Hose Only (30/40/50/60-foot lengths)



GENERAL - ADVANTAGES

- AEROCOUPINGS® 4 inch (10.16cm) general aviation waste coupler is expertly engineered for maximum strength and reliability.
- Say goodbye to spills, leakage, and parts that wear out quickly.
- The collar piece is made of Aluminium making it virtually indestructible. long lasting and non corrosive coupler..

PROPERTIES

4" Lavatory waste Service
 Maintenance-free
 Withstands hot and cold temperature extremes
 Resistant to ramp chemicals and UV rays
 Constructed of lightweight anodized quality aluminum
 Available in yellow, orange and black.

PART NUMBER	
V1004	Lavatory Drain Coupling Straight, Open All Aluminum
V1005	4" Lavatory Drain Coupling Straight, Open Composite Collar with 1 Piece Aluminum Ballcage
V1006	All Composite Drain Coupling
V1007	Lavatory Drain Coupling Straight, Open Composite Collar yellow
V1008	Lavatory Drain Coupling Straight, Open Composite Collar orange
V1004-A	Collar only aluminium
V1004-B	Collar only Composite yellow
V1004-C	Collar only Composite orange
V1004-E	Mainbody anodized aluminium
V1004-F	Locking ball cage ring.



PART NUMBER	
V1004	Lavatory Drain Coupling Straight, Open All Aluminum
V1005	4" Lavatory Drain Coupling Straight, Open Composite Collar with 1 Piece Aluminum Ballcage
V1006	All Composite Drain Coupling
V1007	Lavatory Drain Coupling Straight, Open Composite Collar yellow
V1008	Lavatory Drain Coupling Straight, Open Composite Collar orange
V1004-A	Collar only aluminium
V1004-B	Collar only Composite yellow
V1004-C	Collar only Composite orange
V1004-E	Mainbody anodized aluminium
V1004-F	Locking ball cage ring.





GENERAL - ADVANTAGES

- AEROCOUPINGS® Full aluminium (picture above is anodized black aluminium)
- Our 4 inch (10.16cm) general aviation waste coupler is expertly engineered for maximum strength and reliability.
- Say goodbye to spills, leakage, and parts that wear out quickly.
- The collar piece is made of aluminium making it virtually indestructible. long lasting and non corrosive coupler..

PROPERTIES

4" Lavatory Waste Service
 Maintenance-free
 Withstands hot and cold temperature extremes
 Resistant to ramp chemicals and UV rays
 Constructed of lightweight anodized quality aluminium.

PART NUMBER	
V1004	Lavatory Drain Coupling Straight, Open All Aluminium
V1005	4" Lavatory Drain Coupling Straight, Open Composite Collar with 1 Piece Aluminum Ballcage
V1006	All Composite Drain Coupling





GENERAL - ADVANTAGES

- AEROCOUPINGS® 1" Lavatory Service Breakaway Coupling Reconnectable , 100 lb. Break Rated
- Used to prevent damage to the aircraft lavatory service panel and other equipment.
- Re-usable with new "snap ring" and "o" ring.
- Constructed of lightweight anodized quality aluminum.
- Tab of the internal shear ring will break and allow the nipple and housing of the coupling to separate.

PROPERTIES

1" Lavatory Service
 Maintenance-free
 Withstands hot and cold temperature extremes
 Resistant to ramp chemicals and UV rays
 Constructed of lightweight anodized quality aluminum.

PART NUMBER	
AC19044	1" Lavatory Service Breakaway Coupling Reconnectable , 100 lb. Break Rated
ACP1904-B	3/4" AEROCOUPINGS® Purre water Breakaway Coupling Reconnectable



GENERAL - ADVANTAGES

- AEROCOUPPLINGS® Lavatory Male Drain Nipple
- No maintenance.
- Constructed of lightweight anodized quality aluminum

PART NUMBER	
ACC-LAV-MN	Lavatory Male Drain Nipple



PROPERTIES

Flange Coupling
Maintenance-free
Withstands hot and cold temperature extremes
Resistant to ramp chemicals and UV rays
Constructed of lightweight anodized quality aluminum.

PART NUMBER	
ARSH190	Flange Coupling
ARSH1904-L	Flange Coupling long



PROPERTIES

Flange Coupling
Maintenance-free
Withstands hot and cold temperature extremes
Resistant to ramp chemicals and UV rays
Constructed of lightweight anodized quality aluminum.

PART NUMBER	
ARSH190	Flange Coupling
ARSH1904-L	Flange Coupling long



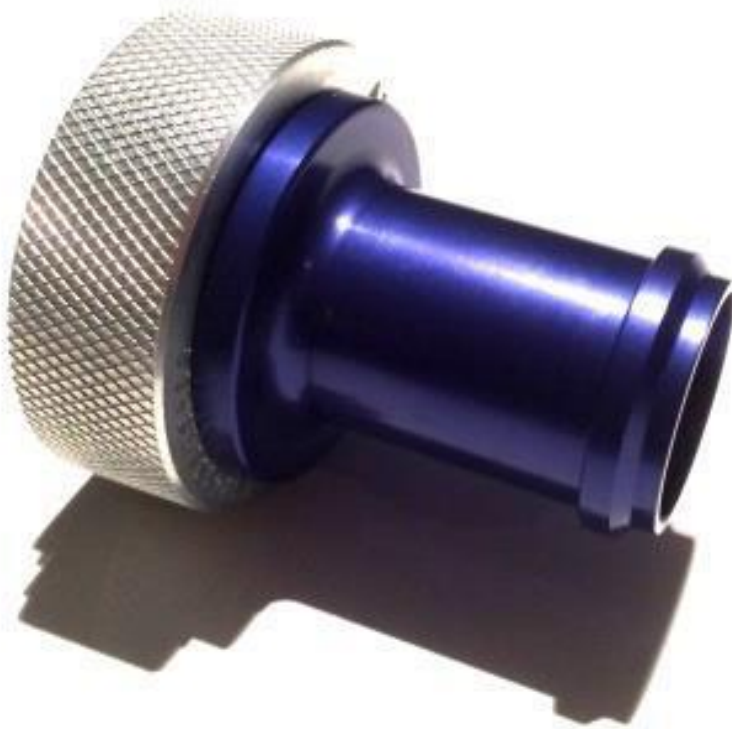
PART NUMBER	
ACC_DC	4" Drain Cap with lock indication (AEROCOUPINGS® 4 inch (10.16 cm) lavatory cap. Used for closing waste equipped units)
ACC-DCP	4" Drain Cap Plastic



PROPERTIES

- 3/4" Pure water coupling Service
- Maintenance-free
- Withstands hot and cold temperature extremes
- Resistant to ramp chemicals and UV rays
- Constructed of lightweight anodized quality aluminum.

PART NUMBER	
ACC-WCL	AEROCOUPINGS® 3/4" Water Coupling Extended Collar
ACC-WC	AEROCOUPINGS® 3/4" Water Coupling.



PROPERTIES

1" LAV rinse coupling Service
Maintenance-free
Withstands hot and cold temperature extremes
Resistant to ramp chemicals and UV rays
Constructed of lightweight anodized quality aluminum.

PART NUMBER	
ACC-LAV-L	AEROCOUPINGS® 1" Coupling Extended Collar
ACC-LAV	AEROCOUPINGS® 1" LAV Coupling.



PROPERTIES

1" Lavatory Service Fill & Flush Cap Tang Collar.

PART NUMBER	
ACC-FCT	AEROCOUPINGS® 1" Lavatory Service Fill & Flush Cap Tang Collar



PROPERTIES

Lavatory Service
Maintenance-free
Withstands hot and cold temperature extremes
Resistant to ramp chemicals and UV rays
VACUUM ASSIST LAVATORY HOSE WITH END SCUFFS.

PART NUMBER	
ACC-VCH	VACUUM ASSIST LAVATORY HOSE WITH END CUFFS (specify length upon ordering)



PROPERTIES

Withstands hot and cold temperature extremes
Resistant to ramp chemicals and UV rays
HOSE RINSE/FILL 1 INCH/25.4MM BRAIDED PVC

PART NUMBER	
ACC-HR	HOSE RINSE/FILL 1 INCH/25.4MM BRAIDED PVC



PROPERTIES

HOSE POTABLE WATER FOOD GRADE

Withstands hot and cold temperature extremes
Resistant to ramp chemicals and UV rays

PART NUMBER	
ACC-HFG	HOSE POTABLE WATER FOOD GRADE



PROPERTIES

PLUG DUST CAP 3/4" POTABLE WATER FILL
MODIFIED W/HOLE FOR CHAIN & LANYARD

Withstands hot and cold temperature extremes
Resistant to ramp chemicals and UV rays
Constructed of lightweight anodized quality aluminum.

PART NUMBER	
ACCWFC	PLUG DUST CAP 3/4" POTABLE WATER FILL MODIFIED W/HOLE FOR CHAIN & LANYARD



PROPERTIES

POTABLE WATER PLUG/DUST CAP ¾ MODIFIED
WITH HOLE FOR CHAIN & LANYARD.

PART NUMBER

ACC-DC

POTABLE WATER PLUG/DUST CAP ¾ MODIFIED
WITH HOLE FOR CHAIN & LANYARD



PROPERTIES

Oil Fill Coupling Assembly, Size -6 Push-Pull Type in Stainless Steel

PART NUMBER	
ACC_OIL-61	Oil Fill Coupling Assembly, Size -6 Push-Pull Type in Stainless Steel
ACC-OIL-62	Plug/Chain Assembly, Size -8, For Oil Over Fill Push-Pull Couplings.



PROPERTIES

O-Ring, 4-Inch Lavatory Dump/Waste Y-Coupler
 Withstands hot and cold temperature extremes
 Resistant to ramp chemicals and UV rays
 Constructed from high quality raw materials .

3/4" Aircraft Potable Water Fill Coupler Silicone O-Ring is used to seal aircraft connections when filling the aircraft potable water tanks available and 1" Aircraft LAV Water Fill Coupler Silicone O-Ring available.

PART NUMBER	
V1004-S	1" Lavatory Service Breakaway Coupling Reconnectable , 100 lb. Break Rated
V1004-T	3/4" AEROCOUPINGS® Purewater seal
V1004-U	1" AEROCOUPINGS® LAV seal



PROPERTIES

4-Inch Lavatory Coupler Stow Flange

Maintenance-free

Withstands hot and cold temperature extremes

Resistant to ramp chemicals and UV rays

Constructed of lightweight anodized quality aluminum.

4" (10.16 cm) GA-coupler or Y-Coupler Stow Flange Anodized gold

Please contact AEROCOUPPLINGS® for more information on the Lavatory Coupler Stow Flange, 4-Inch. We are here to help with all your GSE requirements.

PART NUMBER	
V1008	4-Inch Lavatory Coupler Stow Flange AEROCOUPPLINGS®



PROPERTIES

Lavatory Coupler Plug, 4-Inch
4" (10.16 cm) Plug for GA or Y Coupler
Also used in Lear WASTE Adapter assembly and as stow nipple for LC60 GA coupler
Maintenance-free
Withstands hot and cold temperature extremes
Resistant to ramp chemicals and UV rays
Constructed of lightweight anodized quality aluminum.

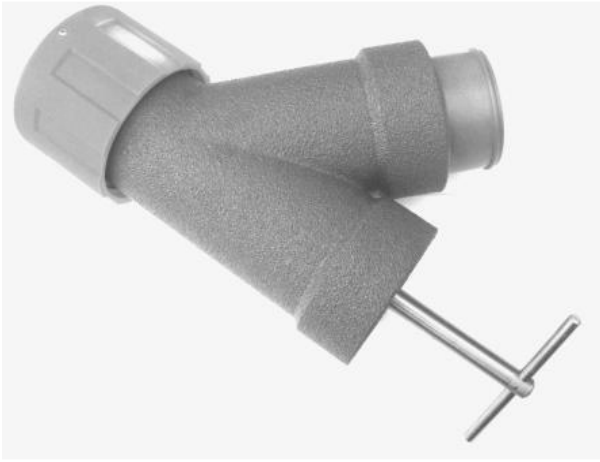
PART NUMBER	
V-PLUG-1004	Lavatory Coupler Plug, 4-Inch



PROPERTIES

4-Inch Aircraft Lavatory Plug Cap
Withstands hot and cold temperature extremes
Resistant to ramp chemicals and UV rays
Constructed of lightweight anodized quality aluminum.

PART NUMBER	
ACC-LVC	4-Inch Aircraft Lavatory Plug Cap



PROPERTIES

Waste Y-Coupler, Wye, 4-Inch
 Withstands hot and cold temperature extremes
 Resistant to ramp chemicals and UV rays
 Constructed of lightweight materials.

Composite airline Wye (Y-type) 4" waste coupler. Will fit any aircraft except for Lear 60-series.
 4" (10.16 cm) diameter connection

Compares to Tronair Wye Type Dump Connector Coupling Kits, part numbers H-1769, K-2029, K-2922, K-2413, K-2030, K-2412, K-1029-A1. Other: M2651-133-31, M2651-133-11, V2651J206P10 and V2651J133P10.
 NSN: 4730-01-481-5632

PART NUMBER	
ACC-Y-COUPLER	Waste Y-Coupler, Wye, 4-Inch AEROCOUPPLINGS®



PROPERTIES

AEROCOUPPLINGS® 1" Lavatory Service Fill & Flush Cap
Hourglass Collar.
AEROCOUPPLINGS® 1" Lavatory Service Fill & Flush Cap Hourglass Collar

PART NUMBER	
ACC-FCHG	AEROCOUPPLINGS® 1" Lavatory Service Fill & Flush Cap Hourglass Collar



PROPERTIES

Potable Water Coupling/Plug Assembly With Chain, Super Stretch Collar, Size -12, 3/4" Hose Barb Termination Withstands hot and cold temperature extremes
Resistant to ramp chemicals and UV rays

PART NUMBER	
AC19044	Potable Water Coupling/Plug Assembly With Chain, Super Stretch Collar, Size -12, 3/4" Hose Barb Termination



PROPERTIES

Potable Water Fill Coupling/Plug/Drag Cushion Assembly Easy Grip Collar, Size -12, 1" High-Flow Hose Barb
Optional with drag cushion.

PART NUMBER	
AC19044-C	Potable Water Fill Coupling/Plug/Drag Cushion Assembly Easy Grip Collar, Size -12, 1" High-Flow Hose Barb



PROPERTIES

Lavatory Service Drain Plug, Size -64.

PART NUMBER	
ACC-SP-1	Lavatory Service Drain Plug, Size -64



PROPERTIES

Potable Water Fill Coupling/Plug/Drag Cushion Assembly With Chain, Super Stretch Collar, Size -12 With Ball Shut-Off Valve, 3/4" Hose Barb Termination. .

PART NUMBER	
ACC-PW-1B	Potable Water Fill Coupling/Plug/Drag Cushion Assembly With Chain, Super Stretch Collar, Size -12 With Ball Shut-Off Valve, 3/4" Hose Barb Termination.



PROPERTIES

Potable Water Drag Cushion, Size 3.5 Diameter. .



PART NUMBER	
ACCPW-DC	Potable Water Drag Cushion, Size 3.5 Diameter.



PROPERTIES

Potable Water Fill Coupling, Standard Collar, Size -12, 3/4" Hose Barb Termination.
Maintenance-free
Withstands hot and cold temperature extremes
Resistant to ramp chemicals and UV rays
Constructed of lightweight anodized quality aluminum or stainless steel.

PART NUMBER	
ACC-SCW-1	Potable Water Fill Coupling, Standard Collar, Size -12, 3/4" Hose Barb Termination.



PROPERTIES

Potable Water Fill Coupling /Plug Assembly, Long Barrel Collar,
Maintenance-free
Withstands hot and cold temperature extremes
Resistant to ramp chemicals and UV rays
Constructed of lightweight anodized quality aluminum.

PART NUMBER

ACC-SCW-2

Potable Water Fill Coupling, 3 inch Collar, Size -12, 3/4" Hose Barb Termination.



PROPERTIES

PCA band clamp (available in 8, 10 and 12 inch)

PART NUMBER	
ACCBC8	PCA band clamp 8 inch
ACCBC10	PCA band clamp 10 inch
ACCBC12	PCA band clamp 12 inch



PROPERTIES

Air Start Hose Splice
Maintenance-free
Withstands hot and cold temperature extremes
Resistant to ramp chemicals and UV rays

PART NUMBER	
ASC_SPLICE	Air Start Hose Splice





PROPERTIES

PCA hoses made in Belgium
Different configurations available.

PART NUMBER	



PROPERTIES

Cuff set 2 piece

Used with air start hose assemblies where taper barbed flanged end fittings are in use. Tapered design prevents separation under pressure; cuffs protect the duct from damage and spread the torque load evenly for maximum security..

PART NUMBER	
ASC-CUFF_2	Used with air start hose assemblies where taper barbed flanged end fittings are in use. Tapered design prevents separation under pressure; cuffs protect the duct from damage and spread the torque load evenly for maximum security.



PROPERTIES

Cuff set 3 piece

Used with Air Start hose assemblies where a parallel tailpipe is fitted. Cuffs protect the duct from damage and spread the torque load evenly for maximum security..

PART NUMBER	
ASC-CUFF_3	Used with Air Start hose assemblies where a parallel tailpipe is fitted. Cuffs protect the duct from damage and spread the torque load evenly for maximum security.



PROPERTIES

AEROCOUPPLINGS®
Potable Water Fill Cap Assembly, Size -12 Lever Operated Ball Lock Cap With 6" Long Bead Chain-NAS1201 Termination.

PART NUMBER	
ACC-PWFC	AEROCOUPPLINGS® Potable Water Fill Cap Assembly, Size -12 Lever Operated Ball Lock Cap With 6" Long Bead Chain-NAS1201 Termination



PROPERTIES

Air Start Coupling with "Y" Adapter With Check Valves And Screen..

PART NUMBER	
ASC-Y-1001	Air Start Coupling with "Y" Adapter With Check Valves And Screen.



PROPERTIES

HCK-002684 Hydraulic Coupling Hose Adapter Kit.

TABLE

PART NUMBER	
ACHFC-1001	HCK-002684 Hydraulic Coupling Hose Adapter Kit



PROPERTIES

Oil Fill Coupling Assembly, Size -6 Push-Pull Type. .

PART NUMBER	
ACC-C1004	Oil Fill Coupling Assembly, Size -6 Push-Pull Type.



PROPERTIES

Oil Fill Coupling Assembly, Size -6 Push-Pull Type. .

PART NUMBER	
ACC-1005	Oil Fill Coupling Assembly, Size -6 Push-Pull Type.



PROPERTIES

Oil Fill Coupling CAP, Size -6 .

PART NUMBER	
ACC-C1005	Oil Fill Coupling CAP, Size -6



PROPERTIES

4-Inch Aluminum Cam & Groove Hose Coupling, Aircraft Lavatory Service (Type C).

aluminum cam & groove (AKA camlock) fitting is used in aircraft lavatory servicing to prevent leakage. It is intended for use on 4" I.D. aircraft lavatory service hoses. This fitting features an aluminum body with brass levers.

PART NUMBER	
ACC-LAV-4	4-Inch Aluminum Cam & Groove Hose Coupling, Aircraft Lavatory Service (Type C)



PROPERTIES

Rubber Coupling, 3-Inch

3" (7.62 cm) rubber coupling.

Cl/Plastic to 3" Cl/Plastic.

PART NUMBER	
ACC-C1010	3 inch rubber coupling



PROPERTIES

HondaJet Lavatory Waste & Fill Adapter/Coupler Kit.

Waste & Fill coupler adapters for HondaJet aircraft.

Used to fill and dump the lavatory system on a HondaJet HA-420 (using a standard lavatory cart 4" waste coupler and 1" fill coupler).

PART NUMBER	
ACC-1011	AEROCOUPINGS® HondaJet Lavatory Waste & Fill Adapter/Coupler Kit.



PROPERTIES

Lavatory Hose 7' Extension with Couplers, Translucent Blue Urethane
Maintenance-free
Withstands hot and cold temperature extremes
Resistant to ramp chemicals and UV rays
Constructed of lightweight anodized quality aluminum couplings.

Includes:

6'-3" (1.91 m) long blue lav hose
4" (10.16 cm) composite GA coupler (for connecting to aircraft)
4" (10.16 cm) anodized aluminum GA-nipple flange (for connecting to GA coupler on lav cart hose).
This item is shipped assembled and ready to use.

PART NUMBER	
ACC-1012	AEROCOUPINGS® Lavatory Hose 7' Extension with Couplers, Translucent Blue Urethane



PROPERTIES

Lavatory Service
Stock item
Lavatory Waste Donut Removal Tool, T-Handle
Maintenance-free
Withstands hot and cold temperature extremes
Resistant to ramp chemicals and UV rays
Constructed of lightweight anodized quality aluminum.

PART NUMBER	
ACC-1013	AEROCOUPINGS®Lavatory Waste Donut Removal Tool, T-Handle



PROPERTIES

Learjet Lavatory Fill Adapter/Coupler

Maintenance-free

Withstands hot and cold temperature extremes

Resistant to ramp chemicals and UV rays

Constructed of lightweight anodized quality aluminum.

Fill coupler adapter for Learjets, including models 45 and 60.

Kit components:

Aircraft fill connection

Reinforced nylon tube

Adapter for connection to standard fill coupler.

All parts are securely banded together and sealed with teflon tape

PART NUMBER	
ACC-1014	AEROCOUPINGS® Learjet Lavatory Fill Adapter/Coupler



PROPERTIES

Learjet Lavatory Waste and Fill Adapter/Coupler
Maintenance-free
Withstands hot and cold temperature extremes
Resistant to ramp chemicals and UV rays
Constructed of lightweight anodized quality aluminum.
Fill coupler adapter for Learjets, including models 45 and 60.
Kit components:
Aircraft fill connection
Reinforced nylon tube
Adapter for connection to standard fill coupler.
All parts are securely banded together and sealed with teflon tape

PART NUMBER	
ACC-1015	AEROCOUPINGS® Learjet Lavatory Waste and Fill Adapter/Coupler



PROPERTIES

Rebuild Kit for Lavatory Waste Coupler (Y-Coupler/GA Coupler).
Stock item

PART NUMBER	
ACC-SK-1001	AEROCOUPINGS® Rebuild Kit for Lavatory Waste Coupler (Y-Coupler/GA Coupler)



PROPERTIES

- 3/4" Pure water Service
- Fill Kit, Potable Water
- Maintenance-free
- Withstands hot and cold temperature extremes
- Resistant to ramp chemicals and UV rays
- Constructed of lightweight anodized quality aluminum.

PART NUMBER	
ACC-V1019	AEROCOUPINGS® Fill Kit, Potable Water



PROPERTIES

1" Lavatory Service seal
Withstands hot and cold temperature extremes
Resistant to ramp chemicals and UV rays.

PART NUMBER	
ACC-V1023	1" Lavatory Service Seal AEROCOUPPLINGS®
ACC-V1024	3/4" Water Service Seal AEROCOUPPLINGS®



PROPERTIES

- Male Extension Nipple
- To extend hoses
- Maintenance-free
- Withstands hot and cold temperature extremes
- Resistant to ramp chemicals and UV rays

PART NUMBER	
ACC-V1027	AEROCOUPINGS® Male Extension Nipple



PROPERTIES

Lavatory Service
Sani-Pak Lavatory Sanitizer-Deodorant, 80-Gram Powder Tube

PART NUMBER	
ACC-LAV-B03	Sani-Pak Lavatory Sanitizer-Deodorant, 80-Gram Powder Tube



PROPERTIES

Disinfection and Cleaning Kit: Disinfectant, Hand Sanitizer, Procedure Masks, All-Purpose Cleaner .

PART NUMBER	
ACC-V1031	Disinfection and Cleaning Kit: Disinfectant, Hand Sanitizer, Procedure Masks, All-Purpose Cleaner



PART NUMBER	
ACC-chock3	Yellow aircraft chocks 60 cm



PROPERTIES

Full rubber 30 cm.

PART NUMBER

ACC-chocks-4



PART NUMBER

ACC- chock5

40 cm x 17 cm x 17cm full rubber



GENERAL - ADVANTAGES

- Aircraft Pre-Conditioned Air (PCA) Inlet Coupler/Adapter/Connector is designed for use with aircraft air conditioning and heating units.
- The PCA adapter/coupler connects PCA hoses/ducting or a PCA hose reducers to aircraft. The high-impact polyurethane body and amorphous nylon construction offer unmatched overall durability. The stainless steel clamps and hardware will not corrode. Two security handles lock the coupler in place to guarantee aircraft cabin temperatures maintain the desired levels.
- This PCA connector quickly installs and attaches to the aircraft in seconds without the need for connection tools.

PROPERTIES

Diameter: 8"
 Maintenance-free
 Fits ATA standard flange grip
 Will not dent
 Withstands hot and cold temperature extremes
 Resistant to ramp chemicals and UV rays
 Stainless steel clamps & hardware will not corrode
 Ergonomic handles for convenient carrying

PART NUMBER	
ACPCA035	8 inch PCA yellow
ACPCA033	8 inch PCA black.
ACPCA033	8 inch PCA aluminium
ACPCA043	8 inch PCA swivel / 45°
ACPCA038	PCA replacement rubber top
ACPCA038G	PCA screen
ACPCA035	PCA 12 inch



GENERAL - ADVANTAGES

- Aircraft Pre-Conditioned Air (PCA) Inlet Coupler/Adapter/Connector is designed for use with aircraft air conditioning and heating units.
- The PCA adapter/coupler connects PCA hoses/ducting or a PCA hose reducers to aircraft. The high-impact polyurethane body and amorphous nylon construction offer unmatched overall durability. The stainless steel clamps and hardware will not corrode. Two security handles lock the coupler in place to guarantee aircraft cabin temperatures maintain the desired levels.
- This PCA connector quickly installs and attaches to the aircraft in seconds without the need for connection tools.

PROPERTIES

Diameter: 8"
 Maintenance-free
 Fits ATA standard flange grip
 Will not dent
 Withstands hot and cold temperature extremes
 Resistant to ramp chemicals and UV rays
 Stainless steel clamps & hardware will not corrode
 Ergonomic handles for convenient carrying

PART NUMBER	
ACPCA035	8 inch PCA yellow
ACPCA033	8 inch PCA black.
ACPCA033	8 inch PCA aluminium
ACPCA043	8 inch PCA swivel / 45°
ACPCA038	PCA replacement rubber top
ACPCA038G	PCA screen
ACPCA035	PCA 12 inch



GENERAL - ADVANTAGES

- Aircraft Pre-Conditioned Air (PCA) Inlet Coupler/Adapter/Connector is designed for use with aircraft air conditioning and heating units.
- The PCA adapter/coupler connects PCA hoses/ducting or a PCA hose reducers to aircraft. The high-impact polyurethane body and amorphous nylon construction offer unmatched overall durability. The stainless steel clamps and hardware will not corrode. Two security handles lock the coupler in place to guarantee aircraft cabin temperatures maintain the desired levels.
- This PCA connector quickly installs and attaches to the aircraft in seconds without the need for connection tools.

PROPERTIES

- Diameter: 8"
- Maintenance-free
- Fits ATA standard flange grip
- Will not dent
- Withstands hot and cold temperature extremes
- Resistant to ramp chemicals and UV rays
- Stainless steel clamps & hardware will not corrode
- Ergonomic handles for convenient carrying

PART NUMBER	
ACPCA035	8 inch PCA yellow
ACPCA033	8 inch PCA black.
ACPCA033	8 inch PCA aluminium
ACPCA043	8 inch PCA swivel / 45°
ACPCA038	PCA replacement rubber top
ACPCA038G	PCA screen
ACPCA035	PCA 12 inch



GENERAL - ADVANTAGES

- Aircraft Pre-Conditioned Air (PCA) Inlet Coupler/Adapter/Connector is designed for use with aircraft air conditioning and heating units.
- The PCA adapter/coupler connects PCA hoses/ducting or a PCA hose reducers to aircraft. The high-impact polyurethane body and amorphous nylon construction offer unmatched overall durability. The stainless steel clamps and hardware will not corrode. Two security handles lock the coupler in place to guarantee aircraft cabin temperatures maintain the desired levels.
- This PCA connector quickly installs and attaches to the aircraft in seconds without the need for connection tools.

PROPERTIES

Diameter: 8"
 Maintenance-free
 Fits ATA standard flange grip
 Will not dent
 Withstands hot and cold temperature extremes
 Resistant to ramp chemicals and UV rays
 Stainless steel clamps & hardware will not corrode
 Ergonomic handles for convenient carrying

PART NUMBER	
ACPCA035	8 inch PCA yellow
ACPCA033	8 inch PCA black.
ACPCA033	8 inch PCA aluminium
ACPCA043	8 inch PCA swivel / 45°
ACPCA038	PCA replacement rubber top
ACPCA038G	PCA screen
ACPCA035	PCA 12 inch



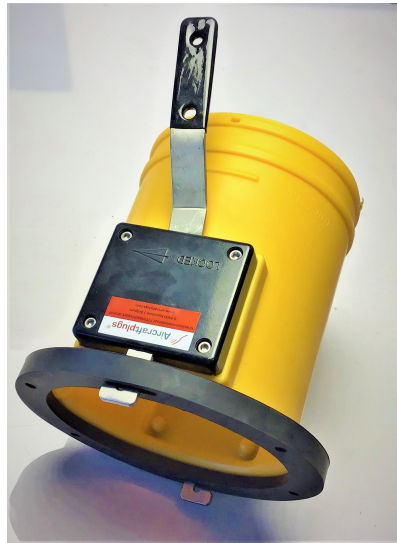
GENERAL - ADVANTAGES

- Aircraft Pre-Conditioned Air (PCA) Inlet Coupler/Adapter/Connector is designed for use with aircraft air conditioning and heating units.
- The PCA adapter/coupler connects PCA hoses/ducting or a PCA hose reducers to aircraft. The high-impact polyurethane body and amorphous nylon construction offer unmatched overall durability. The stainless steel clamps and hardware will not corrode. Two security handles lock the coupler in place to guarantee aircraft cabin temperatures maintain the desired levels.
- This PCA connector quickly installs and attaches to the aircraft in seconds without the need for connection tools.

PROPERTIES

Diameter: 8"
 Maintenance-free
 Fits ATA standard flange grip
 Will not dent
 Withstands hot and cold temperature extremes
 Resistant to ramp chemicals and UV rays
 Stainless steel clamps & hardware will not corrode
 Ergonomic handles for convenient carrying

PART NUMBER	
ACPCA035	8 inch PCA yellow
ACPCA033	8 inch PCA black.
ACPCA033	8 inch PCA aluminium
ACPCA043	8 inch PCA swivel / 45°
ACPCA038	PCA replacement rubber top
ACPCA038G	PCA screen
ACPCA035	PCA 12 inch



GENERAL - ADVANTAGES

- Aircraft Pre-Conditioned Air (PCA) Inlet Coupler/Adapter/Connector is designed for use with aircraft air conditioning and heating units.
- The PCA adapter/coupler connects PCA hoses/ducting or a PCA hose reducers to aircraft. The high-impact polyurethane body and amorphous nylon construction offer unmatched overall durability. The stainless steel clamps and hardware will not corrode. Two security handles lock the coupler in place to guarantee aircraft cabin temperatures maintain the desired levels.
- This PCA connector quickly installs and attaches to the aircraft in seconds without the need for connection tools.

PROPERTIES

Diameter: 8" or 12" or 14"
 Maintenance-free
 Fits ATA standard flange grip
 Will not dent
 Withstands hot and cold temperature extremes
 Resistant to ramp chemicals and UV rays
 Stainless steel clamps & hardware will not corrode
 Ergonomic handles for convenient carrying

PART NUMBER	
ACPCA035	8 inch PCA yellow (with Galvano hook clamps)
ACPCA034	8 inch PCA yellow (over center locking clamps with large grip)
ACPCA033	8 inch PCA black.
ACPCA033A	8 inch PCA aluminium
ACPCA043	8 inch PCA swivel / 45°
ACPCA038	PCA replacement rubber top
ACPCA038G	PCA screen
ACPCA035	PCA 12 inch
ACPCA036	PCA 14 inch



GENERAL - ADVANTAGES

- Aircraft Pre-Conditioned Air (PCA) Inlet Coupler/Adapter/Connector is designed for use with aircraft air conditioning and heating units.
- The PCA adapter/coupler connects PCA hoses/ducting or a PCA hose reducers to aircraft. The high-impact polyurethane body and amorphous nylon construction offer unmatched overall durability. The stainless steel clamps and hardware will not corrode. Two security handles lock the coupler in place to guarantee aircraft cabin temperatures maintain the desired levels.
- This PCA connector quickly installs and attaches to the aircraft in seconds without the need for connection tools.

PROPERTIES

Diameter: 8" or 12" or 14"
 Maintenance-free
 Fits ATA standard flange grip
 Will not dent
 Withstands hot and cold temperature extremes
 Resistant to ramp chemicals and UV rays
 Stainless steel clamps & hardware will not corrode
 Ergonomic handles for convenient carrying

PART NUMBER	
ACPCA035	8 inch PCA yellow (with Galvano hook clamps)
ACPCA034	8 inch PCA yellow (over center locking clamps with large grip)
ACPCA033	8 inch PCA black.
ACPCA033A	8 inch PCA aluminium
ACPCA043	8 inch PCA swivel / 45°
ACPCA038	PCA replacement rubber top
ACPCA038G	PCA screen
ACPCA035	PCA 12 inch
ACPCA036	PCA 14 inch



GENERAL - ADVANTAGES

- Aircraft Pre-Conditioned Air (PCA) Inlet Coupler/Adapter/Connector is designed for use with aircraft air conditioning and heating units.
- The PCA adapter/coupler connects PCA hoses/ducting or a PCA hose reducers to aircraft. The high-impact polyurethane body and amorphous nylon construction offer unmatched overall durability. The stainless steel clamps and hardware will not corrode. Two security handles lock the coupler in place to guarantee aircraft cabin temperatures maintain the desired levels.
- This PCA connector quickly installs and attaches to the aircraft in seconds without the need for connection tools.

PROPERTIES

Diameter: 8" or 12" or 14"
 Maintenance-free
 Fits ATA standard flange grip
 Will not dent
 Withstands hot and cold temperature extremes
 Resistant to ramp chemicals and UV rays
 Stainless steel clamps & hardware will not corrode
 Ergonomic handles for convenient carrying

PART NUMBER	
ACPCA035	8 inch PCA yellow (with Galvano hook clamps)
ACPCA034	8 inch PCA yellow (over center locking clamps with large grip)
ACPCA033	8 inch PCA black.
ACPCA033A	8 inch PCA aluminium
ACPCA043	8 inch PCA swivel / 45°
ACPCA038	PCA replacement rubber top
ACPCA038G	PCA screen
ACPCA035	PCA 12 inch
ACPCA036	PCA 14 inch



GENERAL - ADVANTAGES

- Aircraft Pre-Conditioned Air (PCA) Inlet Coupler/Adapter/Connector is designed for use with aircraft air conditioning and heating units.
- The PCA adapter/coupler connects PCA hoses/ducting or a PCA hose reducers to aircraft. The high-impact polyurethane body and amorphous nylon construction offer unmatched overall durability. The stainless steel clamps and hardware will not corrode. Two security handles lock the coupler in place to guarantee aircraft cabin temperatures maintain the desired levels.
- This PCA connector quickly installs and attaches to the aircraft in seconds without the need for connection tools.

PROPERTIES

Diameter: 8" or 12" or 14"

Maintenance-free

Fits ATA standard flange grip

Will not dent

Withstands hot and cold temperature extremes

Resistant to ramp chemicals and UV rays

Stainless steel clamps & hardware will not corrode

Ergonomic handles for convenient carrying

PART NUMBER	
ACPCA035	8 inch PCA yellow (with Galvano hook clamps)
ACPCA034	8 inch PCA yellow (over center locking clamps with large grip)
ACPCA033	8 inch PCA black.
ACPCA033A	8 inch PCA aluminium
ACPCA043	8 inch PCA swivel / 45°
ACPCA038	PCA replacement rubber top
ACPCA038G	PCA screen
ACPCA035	PCA 12 inch
ACPCA036	PCA 14 inch



GENERAL - ADVANTAGES

- Aircraft Pre-Conditioned Air (PCA) Inlet Coupler/Adapter/Connector is designed for use with aircraft air conditioning and heating units.
- The PCA adapter/coupler connects PCA hoses/ducting or a PCA hose reducers to aircraft. The high-impact polyurethane body and amorphous nylon construction offer unmatched overall durability. The stainless steel clamps and hardware will not corrode. Two security handles lock the coupler in place to guarantee aircraft cabin temperatures maintain the desired levels.
- This PCA connector quickly installs and attaches to the aircraft in seconds without the need for connection tools.

PROPERTIES

Diameter: 8" or 12" or 14"
 Maintenance-free
 Fits ATA standard flange grip
 Will not dent
 Withstands hot and cold temperature extremes
 Resistant to ramp chemicals and UV rays
 Stainless steel clamps & hardware will not corrode
 Ergonomic handles for convenient carrying

PART NUMBER	
ACPCA035	8 inch PCA yellow (with Galvano hook clamps)
ACPCA034	8 inch PCA yellow (over center locking clamps with large grip)
ACPCA033	8 inch PCA black.
ACPCA033A	8 inch PCA aluminium
ACPCA043	8 inch PCA swivel / 45°
ACPCA038	PCA replacement rubber top
ACPCA038G	PCA screen
ACPCA035	PCA 12 inch
ACPCA036	PCA 14 inch



GENERAL - ADVANTAGES

- Aircraft Pre-Conditioned Air (PCA) Inlet Coupler/Adapter/Connector is designed for use with aircraft air conditioning and heating units.
- The PCA adapter/coupler connects PCA hoses/ducting or a PCA hose reducers to aircraft. The high-impact polyurethane body and amorphous nylon construction offer unmatched overall durability. The stainless steel clamps and hardware will not corrode. Two security handles lock the coupler in place to guarantee aircraft cabin temperatures maintain the desired levels.
- This PCA connector quickly installs and attaches to the aircraft in seconds without the need for connection tools.

PROPERTIES

Diameter: 8" or 12" or 14"

Maintenance-free

Fits ATA standard flange grip

Will not dent

Withstands hot and cold temperature extremes

Resistant to ramp chemicals and UV rays

Stainless steel clamps & hardware will not corrode

Ergonomic handles for convenient carrying

PART NUMBER	
ACPCA035	8 inch PCA yellow (with Galvano hook clamps)
ACPCA034	8 inch PCA yellow (over center locking clamps with large grip)
ACPCA033	8 inch PCA black.
ACPCA033A	8 inch PCA aluminium
ACPCA043	8 inch PCA swivel / 45°
ACPCA038	PCA replacement rubber top
ACPCA038G	PCA screen
ACPCA035	PCA 12 inch
ACPCA036	PCA 14 inch



GENERAL - ADVANTAGES

- Aircraft Pre-Conditioned Air (PCA) Inlet Coupler/Adapter/Connector is designed for use with aircraft air conditioning and heating units.
- The PCA adapter/coupler connects PCA hoses/ducting or a PCA hose reducers to aircraft. The high-impact polyurethane body and amorphous nylon construction offer unmatched overall durability. The stainless steel clamps and hardware will not corrode. Two security handles lock the coupler in place to guarantee aircraft cabin temperatures maintain the desired levels.
- This PCA connector quickly installs and attaches to the aircraft in seconds without the need for connection tools.

PROPERTIES

Diameter: 8" or 12" or 14"

Maintenance-free

Fits ATA standard flange grip

Will not dent

Withstands hot and cold temperature extremes

Resistant to ramp chemicals and UV rays

Stainless steel clamps & hardware will not corrode

Ergonomic handles for convenient carrying

PART NUMBER	
ACPCA035	8 inch PCA yellow (with Galvano hook clamps)
ACPCA034	8 inch PCA yellow (over center locking clamps with large grip)
ACPCA033	8 inch PCA black.
ACPCA033A	8 inch PCA aluminium
ACPCA043	8 inch PCA swivel / 45°
ACPCA038	PCA replacement rubber top
ACPCA038G	PCA screen
ACPCA035	PCA 12 inch
ACPCA036	PCA 14 inch



GENERAL - ADVANTAGES

- Aircraft Pre-Conditioned Air (PCA) Inlet Coupler/Adapter/Connector is designed for use with aircraft air conditioning and heating units.
- The PCA adapter/coupler connects PCA hoses/ducting or a PCA hose reducers to aircraft. The high-impact polyurethane body and amorphous nylon construction offer unmatched overall durability. The stainless steel clamps and hardware will not corrode. Two security handles lock the coupler in place to guarantee aircraft cabin temperatures maintain the desired levels.
- This PCA connector quickly installs and attaches to the aircraft in seconds without the need for connection tools.

PROPERTIES

Diameter: 8" or 12" or 14"
 Maintenance-free
 Fits ATA standard flange grip
 Will not dent
 Withstands hot and cold temperature extremes
 Resistant to ramp chemicals and UV rays
 Stainless steel clamps & hardware will not corrode
 Ergonomic handles for convenient carrying

PART NUMBER	
ACPCA035	8 inch PCA yellow (with Galvano hook clamps)
ACPCA034	8 inch PCA yellow (over center locking clamps with large grip)
ACPCA033	8 inch PCA black.
ACPCA033A	8 inch PCA aluminium
ACPCA043	8 inch PCA swivel / 45°
ACPCA038	PCA replacement rubber top
ACPCA038G	PCA screen
ACPCA035	PCA 12 inch
ACPCA036	PCA 14 inch



GENERAL - ADVANTAGES

- Aircraft Pre-Conditioned Air (PCA) Inlet Coupler/Adapter/Connector is designed for use with aircraft air conditioning and heating units.
- The PCA adapter/coupler connects PCA hoses/ducting or a PCA hose reducers to aircraft. The high-impact polyurethane body and amorphous nylon construction offer unmatched overall durability. The stainless steel clamps and hardware will not corrode. Two security handles lock the coupler in place to guarantee aircraft cabin temperatures maintain the desired levels.
- This PCA connector quickly installs and attaches to the aircraft in seconds without the need for connection tools.

PROPERTIES

- Diameter: 8" or 12" or 14"
- Maintenance-free
- Fits ATA standard flange grip
- Will not dent
- Withstands hot and cold temperature extremes
- Resistant to ramp chemicals and UV rays
- Stainless steel clamps & hardware will not corrode
- Ergonomic handles for convenient carrying

PART NUMBER	
ACPCA035	8 inch PCA yellow (with Galvano hook clamps)
ACPCA034	8 inch PCA yellow (over center locking clamps with large grip)
ACPCA033	8 inch PCA black.
ACPCA033A	8 inch PCA aluminium
ACPCA043	8 inch PCA swivel / 45°
ACPCA038	PCA replacement rubber top
ACPCA038G	PCA screen
ACPCA035	PCA 12 inch
ACPCA036	PCA 14 inch



GENERAL - ADVANTAGES

- Aircraft Pre-Conditioned Air (PCA) Inlet Coupler/Adapter/Connector is designed for use with aircraft air conditioning and heating units.
- The PCA adapter/coupler connects PCA hoses/ducting or a PCA hose reducers to aircraft. The high-impact polyurethane body and amorphous nylon construction offer unmatched overall durability. The stainless steel clamps and hardware will not corrode. Two security handles lock the coupler in place to guarantee aircraft cabin temperatures maintain the desired levels.
- This PCA connector quickly installs and attaches to the aircraft in seconds without the need for connection tools.

PROPERTIES

Diameter: 8" or 12" or 14"
 Maintenance-free
 Fits ATA standard flange grip
 Will not dent
 Withstands hot and cold temperature extremes
 Resistant to ramp chemicals and UV rays
 Stainless steel clamps & hardware will not corrode
 Ergonomic handles for convenient carrying

PART NUMBER	
ACPCA035	8 inch PCA yellow (with Galvano hook clamps)
ACPCA034	8 inch PCA yellow (over center locking clamps with large grip)
ACPCA033	8 inch PCA black.
ACPCA033A	8 inch PCA aluminium
ACPCA043	8 inch PCA swivel / 45°
ACPCA038	PCA replacement rubber top
ACPCA038G	PCA screen
ACPCA035	PCA 12 inch
ACPCA036	PCA 14 inch



GENERAL - ADVANTAGES

- Aircraft Pre-Conditioned Air (PCA) Inlet Coupler/Adapter/Connector is designed for use with aircraft air conditioning and heating units.
- The PCA adapter/coupler connects PCA hoses/ducting or a PCA hose reducers to aircraft. The high-impact polyurethane body and amorphous nylon construction offer unmatched overall durability. The stainless steel clamps and hardware will not corrode. Two security handles lock the coupler in place to guarantee aircraft cabin temperatures maintain the desired levels.
- This PCA connector quickly installs and attaches to the aircraft in seconds without the need for connection tools.

PROPERTIES

Diameter: 8" or 12" or 14"
 Maintenance-free
 Fits ATA standard flange grip
 Will not dent
 Withstands hot and cold temperature extremes
 Resistant to ramp chemicals and UV rays
 Stainless steel clamps & hardware will not corrode
 Ergonomic handles for convenient carrying

PART NUMBER	
ACPCA035	8 inch PCA yellow (with Galvano hook clamps)
ACPCA034	8 inch PCA yellow (over center locking clamps with large grip)
ACPCA033	8 inch PCA black.
ACPCA033A	8 inch PCA aluminium
ACPCA043	8 inch PCA swivel / 45°
ACPCA038	PCA replacement rubber top
ACPCA038G	PCA screen
ACPCA035	PCA 12 inch
ACPCA036	PCA 14 inch



GENERAL - ADVANTAGES

- Aircraft Pre-Conditioned Air (PCA) Inlet Coupler/Adapter/Connector is designed for use with aircraft air conditioning and heating units.
- The PCA adapter/coupler connects PCA hoses/ducting or a PCA hose reducers to aircraft. The high-impact polyurethane body and amorphous nylon construction offer unmatched overall durability. The stainless steel clamps and hardware will not corrode. Two security handles lock the coupler in place to guarantee aircraft cabin temperatures maintain the desired levels.
- This PCA connector quickly installs and attaches to the aircraft in seconds without the need for connection tools.

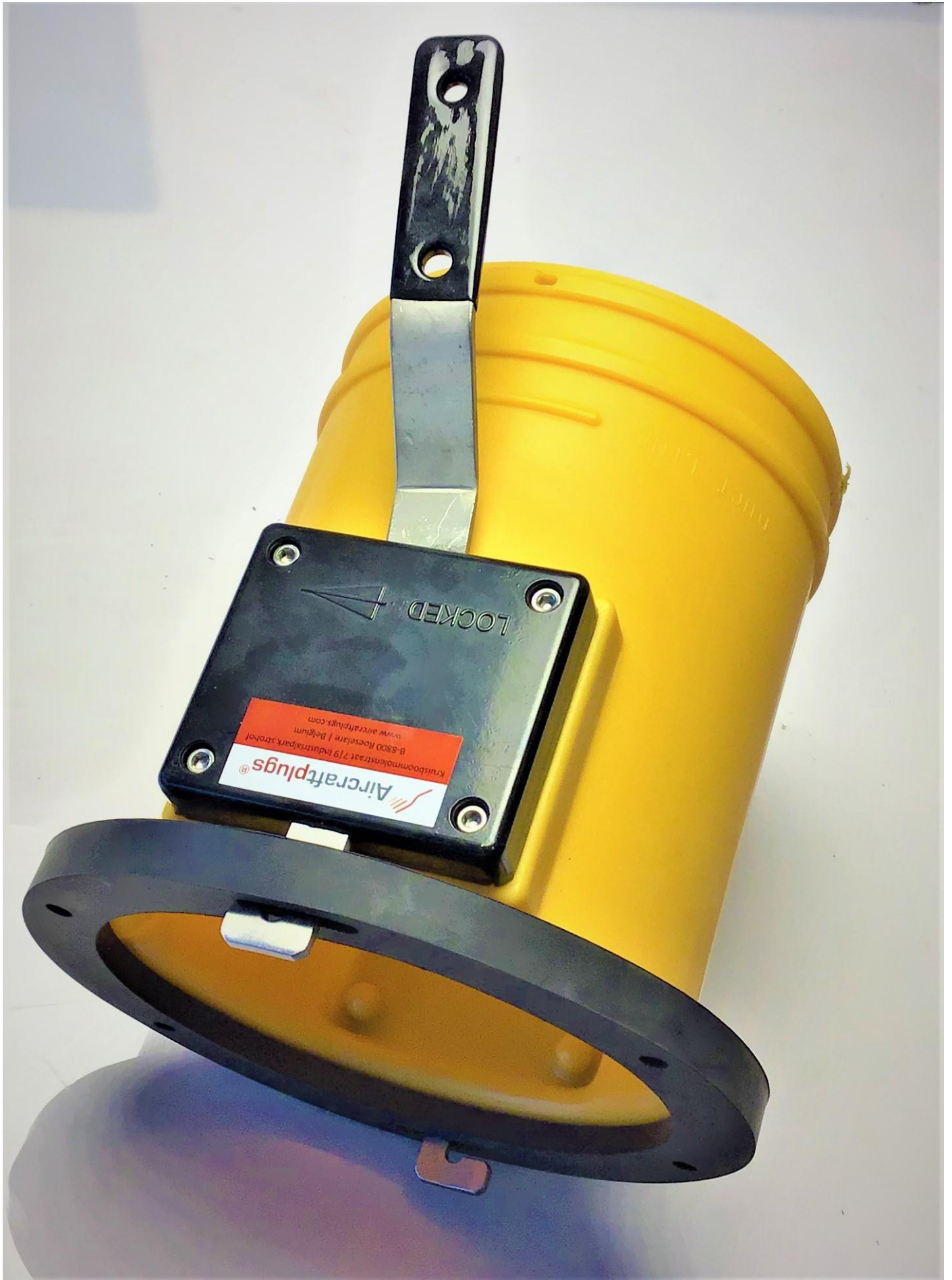
PROPERTIES

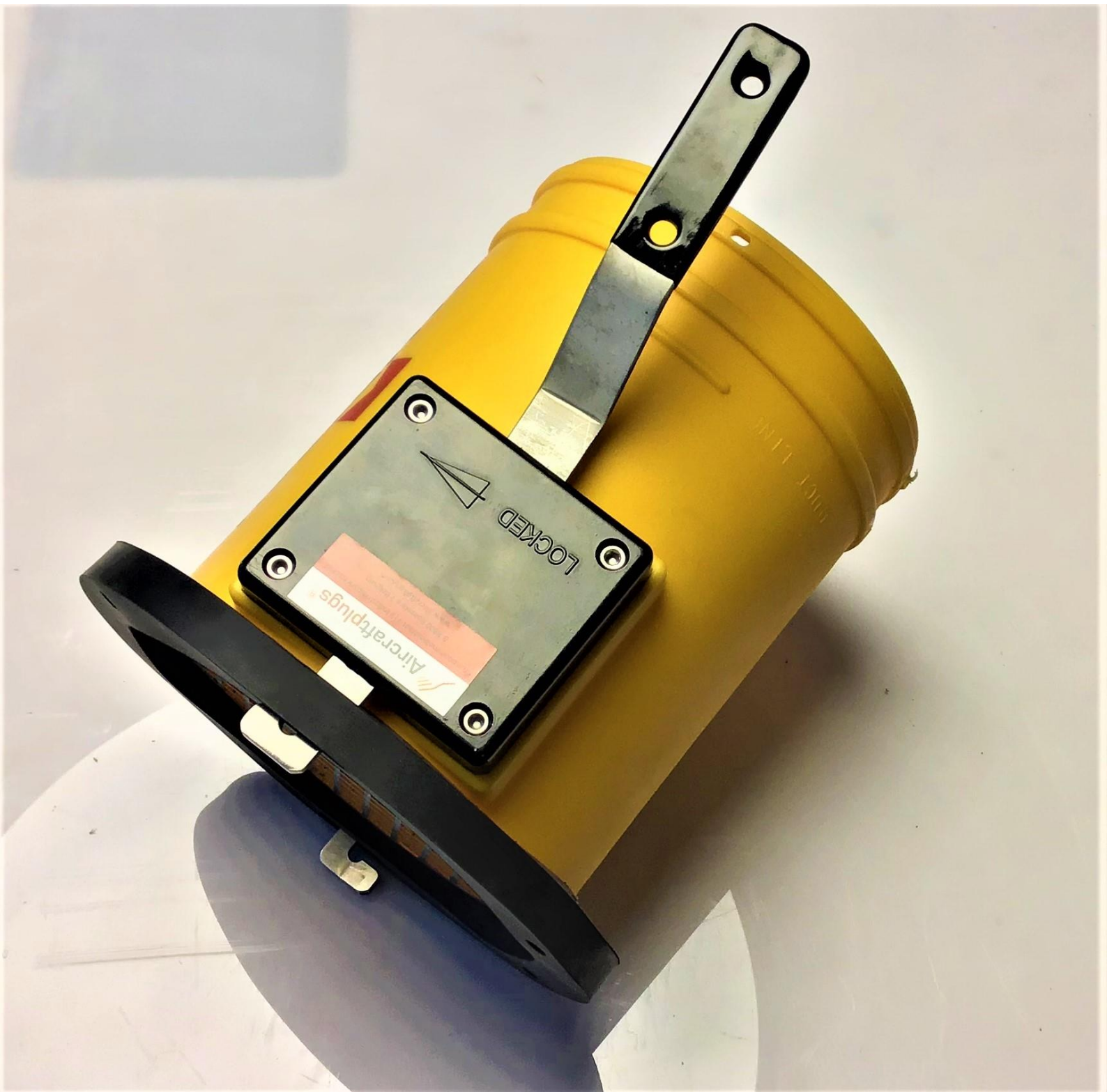
Diameter: 8" or 12" or 14"
 Maintenance-free
 Fits ATA standard flange grip
 Will not dent
 Withstands hot and cold temperature extremes
 Resistant to ramp chemicals and UV rays
 Stainless steel clamps & hardware will not corrode
 Ergonomic handles for convenient carrying

PART NUMBER	
ACPCA035	8 inch PCA yellow (with Galvano hook clamps)
ACPCA034	8 inch PCA yellow (over center locking clamps with large grip)
ACPCA033	8 inch PCA black.
ACPCA033A	8 inch PCA aluminium
ACPCA043	8 inch PCA swivel / 45°
ACPCA038	PCA replacement rubber top
ACPCA038G	PCA screen
ACPCA035	PCA 12 inch
ACPCA036	PCA 14 inch







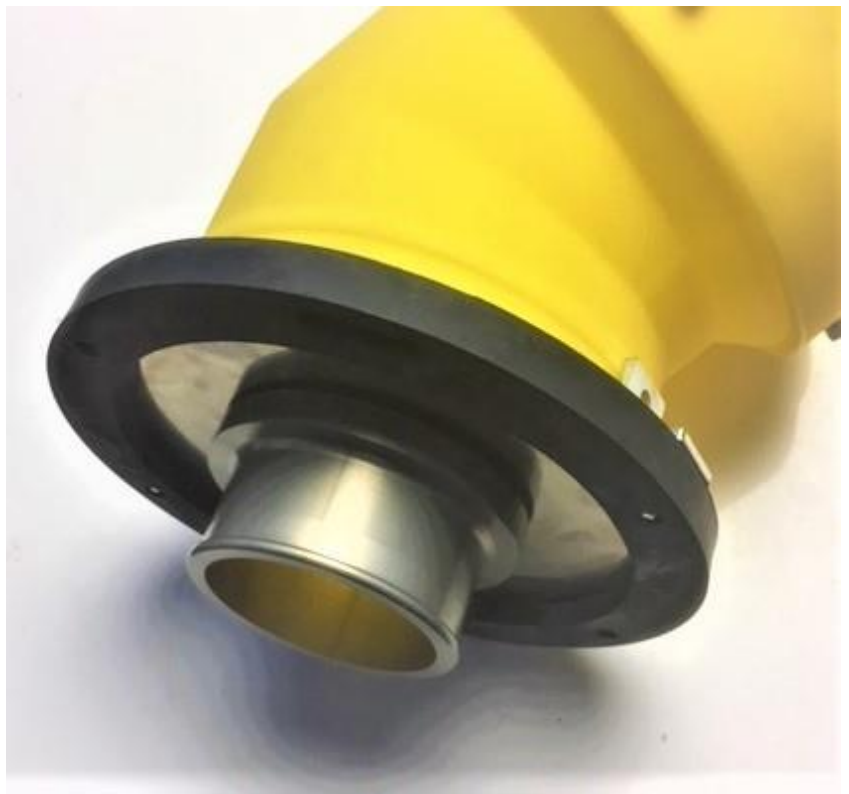
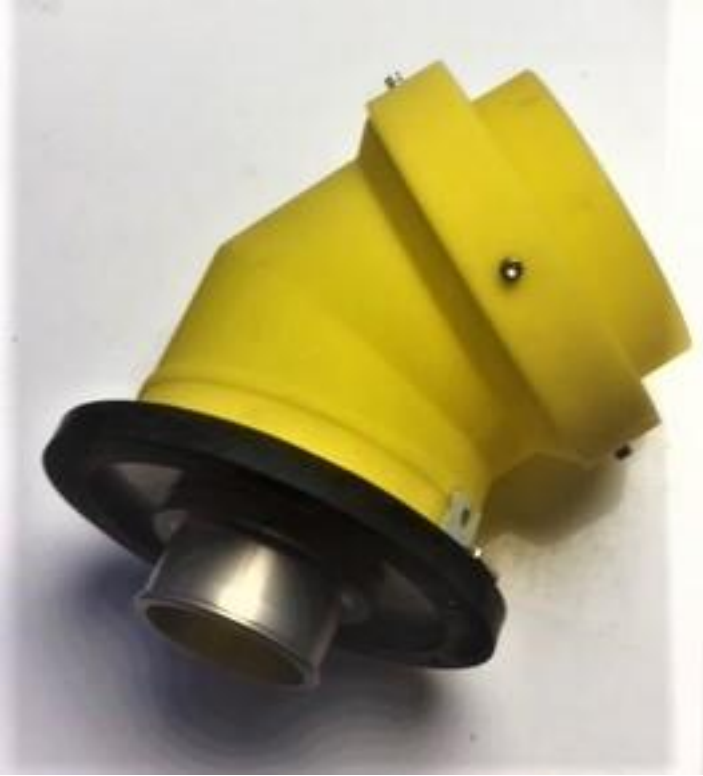




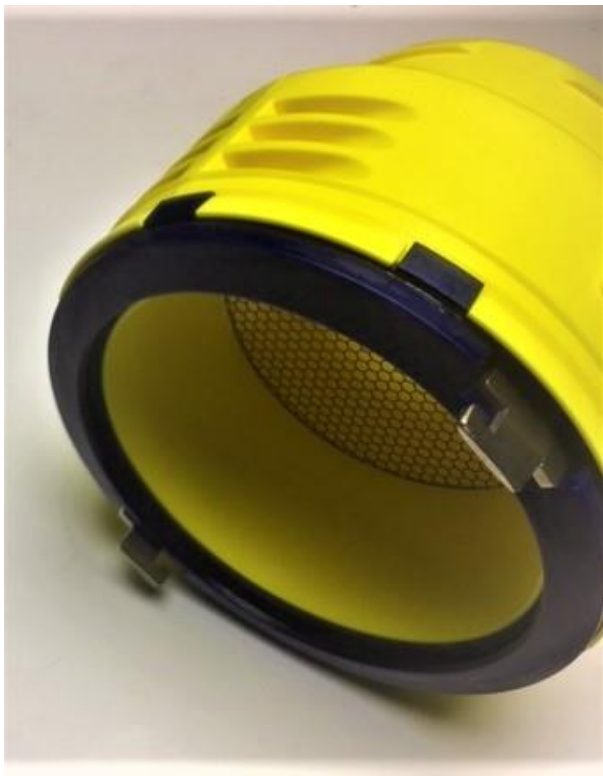


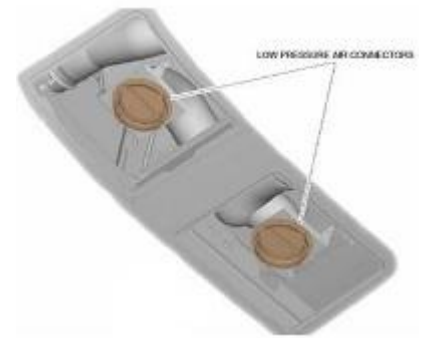


4 inch PCA adapter / with or without swivel



with or without swifel





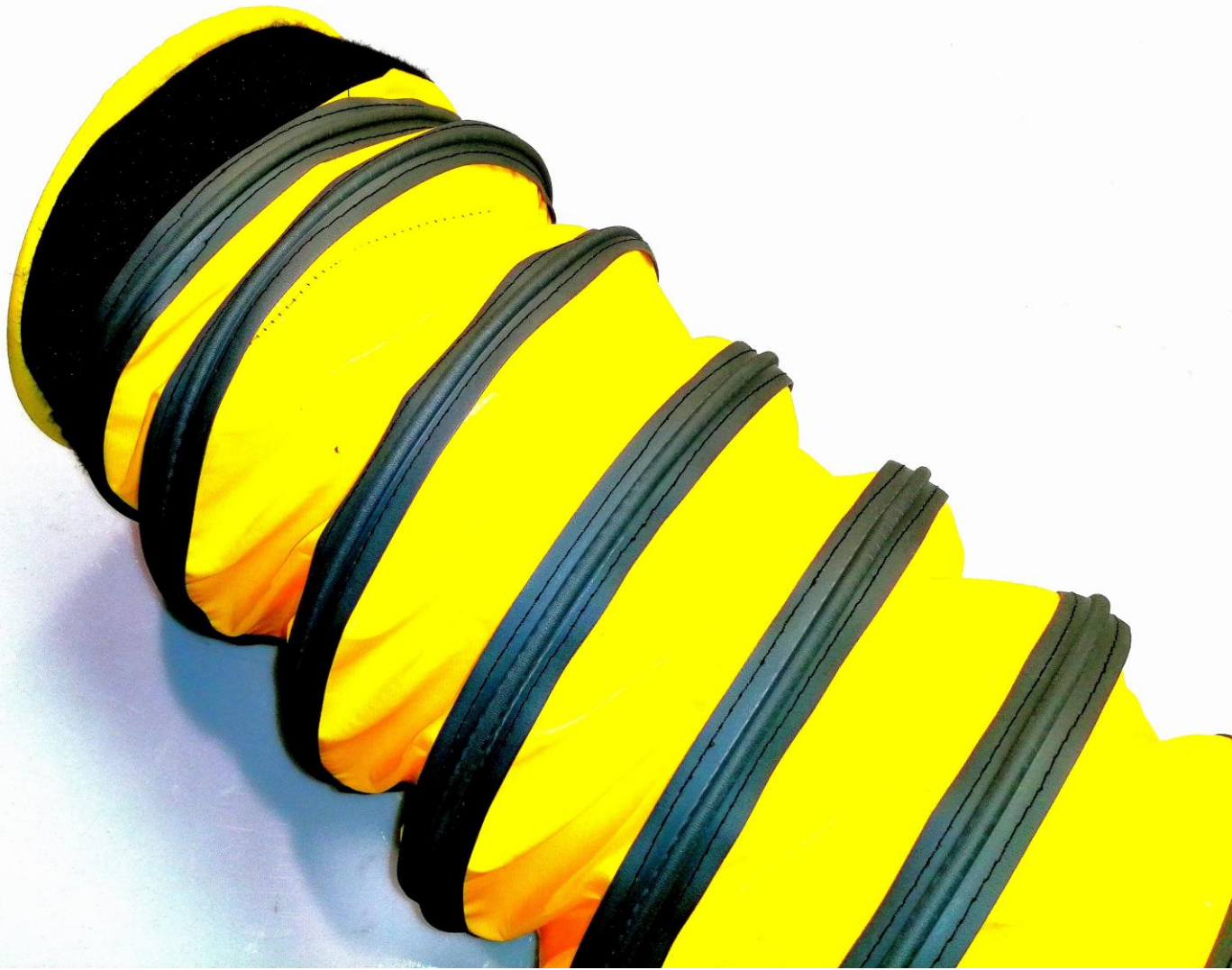
COMPLIES WITH ISO 1034

Diameter: 4 inch , 8" or 12" ,or 14" according to ISO 1034.

(Swivel or not)

ISO1034:1973 Gives the requirements for 127 mm and 203 mm connections (8 inches or 12 inches) for the purpose of air-conditioning from ground sources. The connections shall comply with the basic dimensional requirements.. The ground unit must not project more than 14,0 mm beyond the sealing plane except through defined openings.

International Standard ISO 1034 replaces ISO Recommendation R 1034-1969 drawn up by Technical Committee ISO/TC 20, Aircraft and space vehicles



Celeste PCA® Hose

Fabrics are flame resistant in accordance with the UL94VTM-O Testing Methods.
Abrasion resistant scuff strip



Celeste PCA® Hose

Fabrics are flame resistant in accordance with the UL94VTM-O Testing Methods.
Abrasion resistant scuff strip



Available insulated or non-insulated and in any diameters ranging from 5 inches to 36 inches. Various lengths are available to suit your needs from 3 feet to 40 feet. Ducts can be finished with plain cuffs, zippers, Velcro or a combination thereof.

Steel wire or polymer wire reinforced.

Advantage of our polymer reinforced wires is the durability and flexibility.

Large stock levels., designed for use with aircraft air conditioning and heating units..

Fabrics are flame resistant in accordance with the UL94VTM-O Testing Methods.

Abrasion resistant scuff strip



PARTNUMBERS

Celeste PCA® Hose

HOSE PART	Configuration
ACP-Celeste-PCA-8 inch – specify length	Celeste AERO® Hose 8 inch
ACP-Celeste-PCA-10 inch – specify length	Celeste AERO® Hose 10 inch
ACP-Celeste-PCA-12 inch – specify length	Celeste AERO® Hose 12 inch
ACP-Celeste-PCA-12 inch – specify length	Celeste AERO® Hose 14 inch
ACP-Celeste-PCA-Tailor made	Celeste AERO® Hose - Specs



TECHNICAL DATA

Celeste PCA® Hose

Available insulated or non-insulated and in any diameters ranging from 5 inches to 36 inches. Various lengths are available to suit your needs from 3 feet to 40 feet. Ducts can be finished with plain cuffs, zippers, Velcro or a combination thereof.

Abrasion resistant scuff strip

Cuff zippers and Velcro strips to allow for longer duct assemblies

Available with inside diameters of 8, 10, 12 and 14 inches

Tolerant to temperature variations of -40°F to +125°F

Minimum R-value of 8.0 or greater

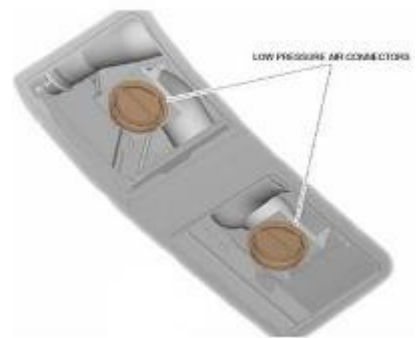


PARTNUMBERS

CPCA® Hose FLAT

HOSE PART	Configuration
FLAT--PCA-8 inch – specify length	Celeste AERO® Hose 8 inch
FLAT--PCA-10 inch – specify length	Celeste AERO® Hose 10 inch
FLAT--PCA-12 inch – specify length	Celeste AERO® Hose 12 inch
FLAT--PCA-12 inch – specify length	Celeste AERO® Hose 14 inch
FLAT--PCA-Tailor made	Celeste AERO® Hose - Specs





COMPLIES WITH ISO 1034

Diameter: 4 inch , 8" or 12" ,or 14" according to ISO 1034.

(Swivel or not)

ISO1034:1973 Gives the requirements for 127 mm and 203 mm connections (8 inches or 12 inches) for the purpose of air-conditioning from ground sources. The connections shall comply with the basic dimensional requirements.. The ground unit must not project more than 14,0 mm beyond the sealing plane except through defined openings.

International Standard ISO 1034 replaces ISO Recommendation R 1034-1969 drawn up by Technical Committee ISO/TC 20, Aircraft and space vehicles

Aerocouplings®

Aerocouplings®

Kruisboommolestraat 7/9
Industrialpark strohof
B-8800 Roeselare
Belgium

Tel: +32.51.77.99.19
Fax: +32.51.79.02.53
AOG Hotline : +32.491.152.980

TVA BE 0816 768 803

Distributed by

The drawings, images, and information are the property of Aircraftplugs ®. Any publication, duplication, disclosure, or any use not authorized by Aircraftplugs ®. is prohibited. patented by DAVIATION BVBA